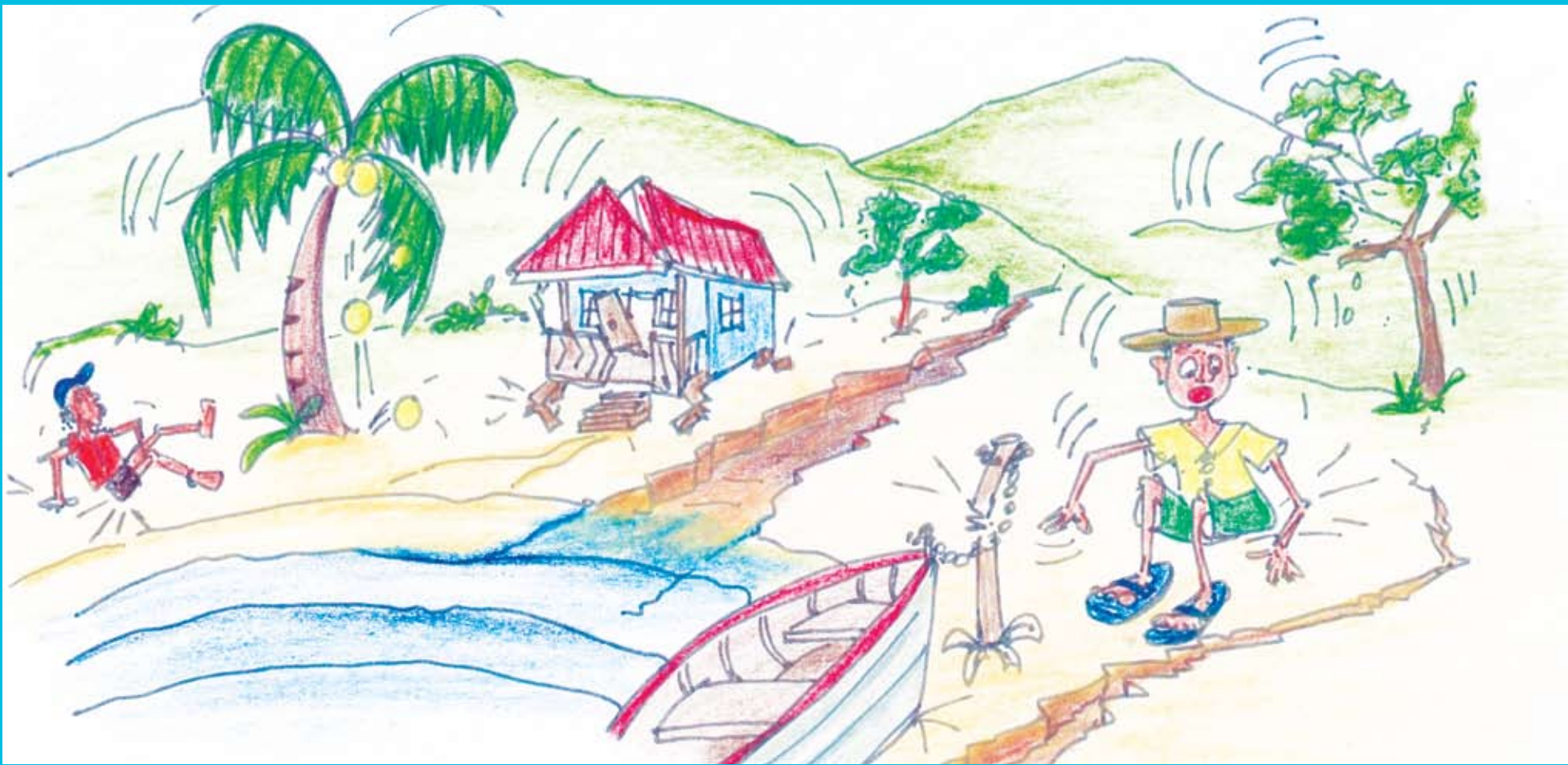
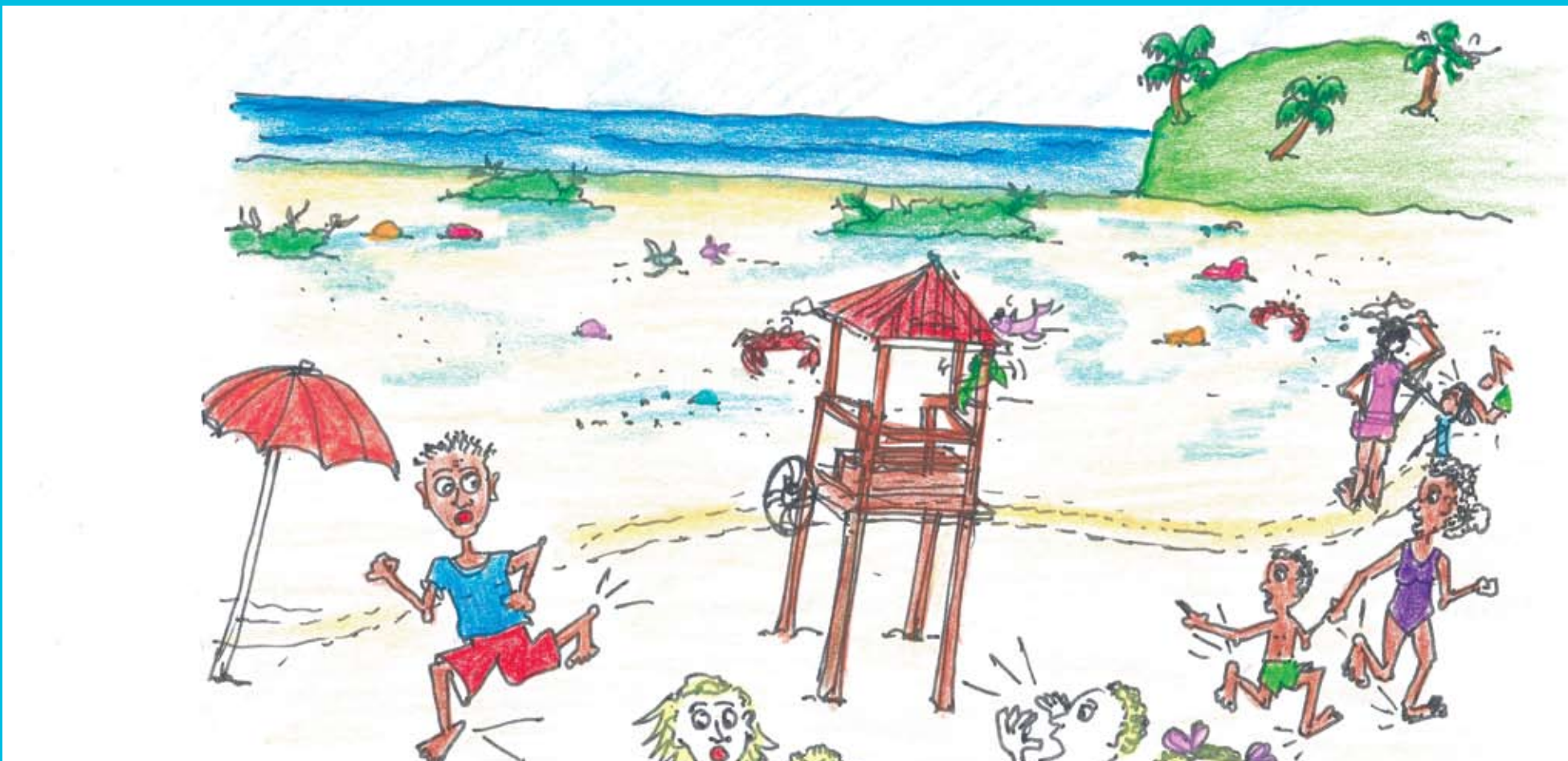


Tsunami Safety

Recognizing any one of these natural tsunami warning signs at the coast could save your life.
Do not wait for official warnings before evacuating.



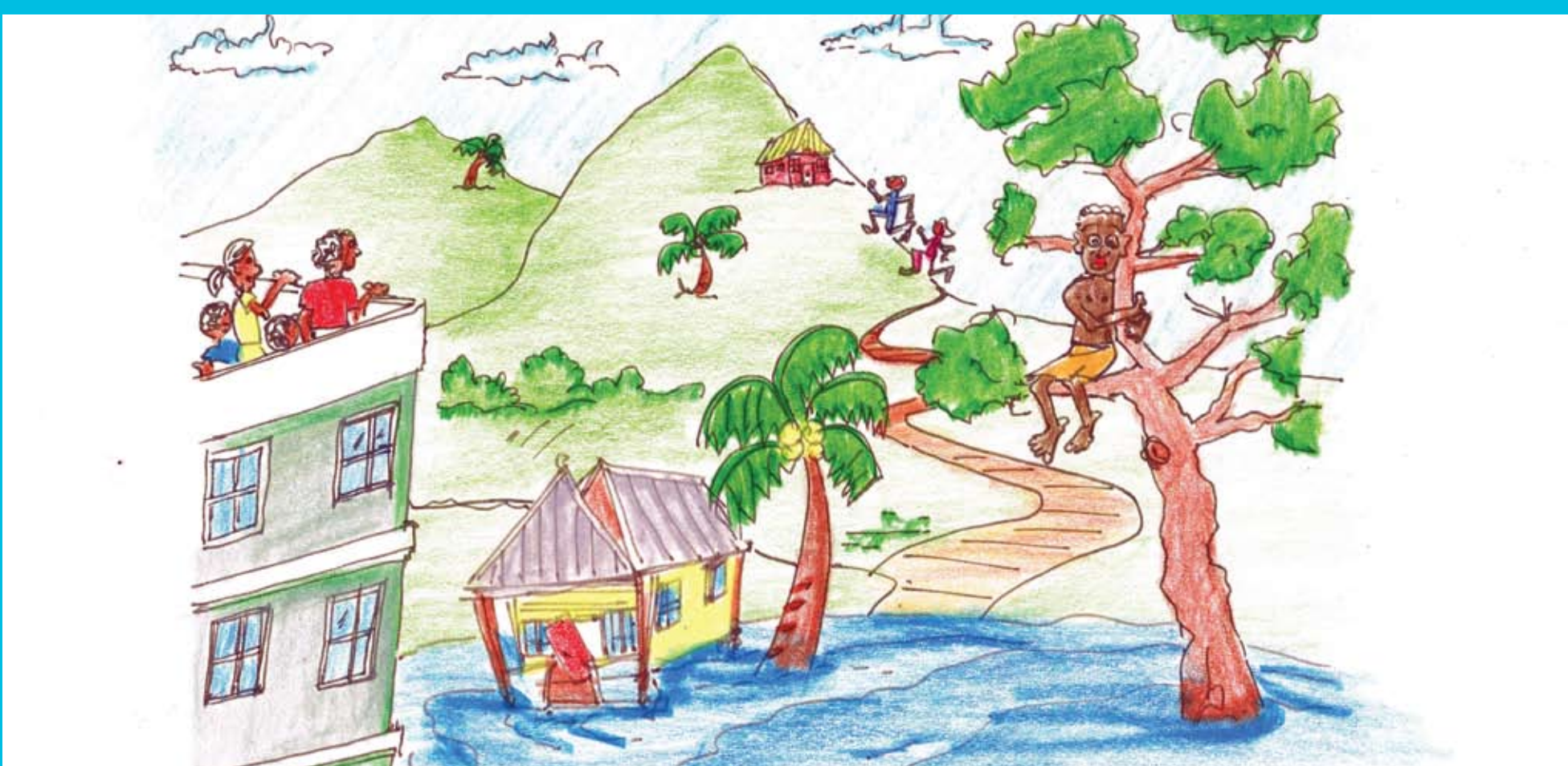
FEEL a very strong earthquake?
RUN



SEE the water withdraw
an unusual distance?
RUN



HEAR a strange roar?
RUN



Leave the beach immediately
if any one of these signs occur
and **RUN** to high ground.
*High ground may also be a roof,
upper floor of a building, or a strong tree.*

BE TSUNAMI SMART, KNOW THE NATURAL SIGNS